

TITLE:

SIZE	DWG. NO.	REV
<b>A</b>	AGL_STANDING ASSEMBLY	April 30

SCALE: 1:5	WEIGHT:	SHEET 1 OF 10
------------	---------	---------------

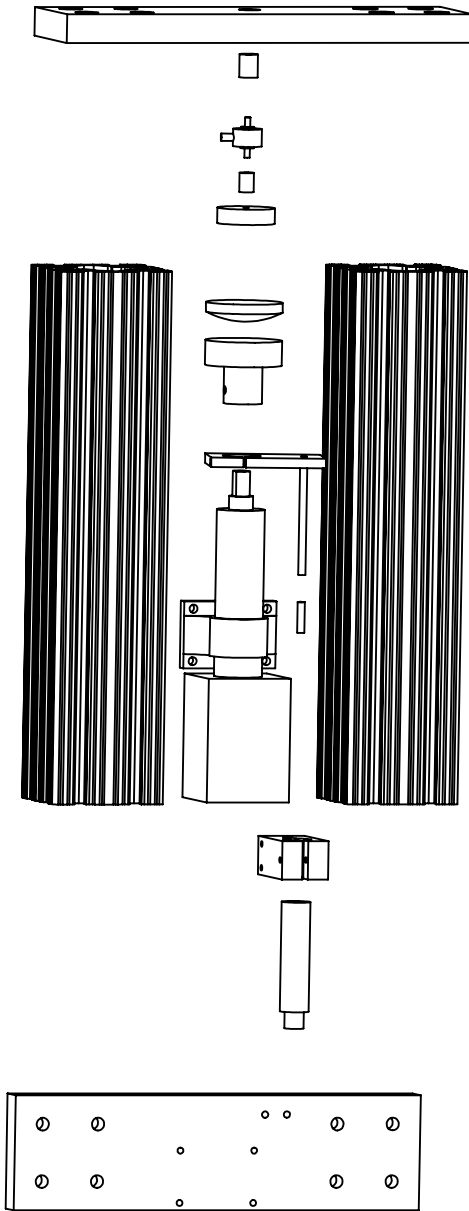
5

4

3

2

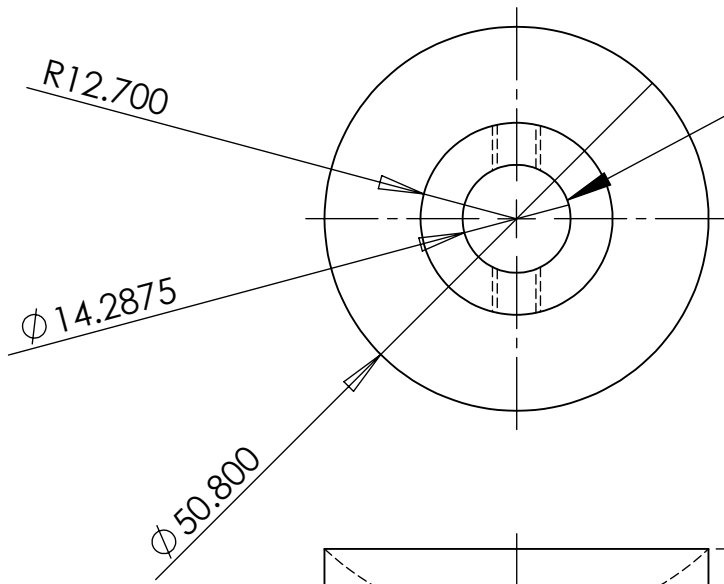
1



TITLE:

SIZE	DWG. NO.	REV
<b>A</b>	AGL_STANDING ASSEMBLY	April 30

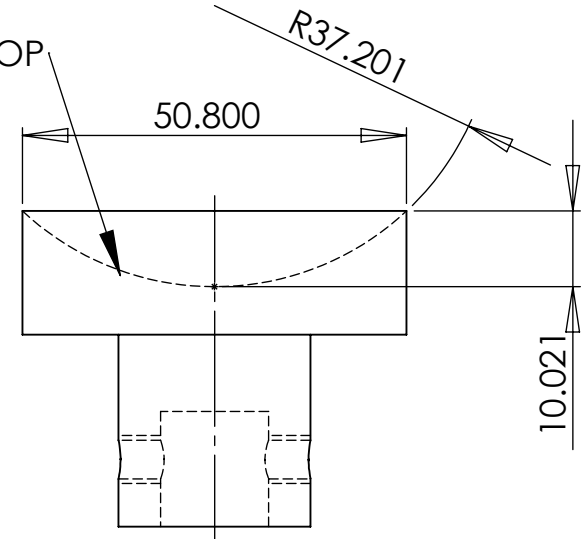
SCALE: 1:5	WEIGHT:	SHEET 2 OF 10
------------	---------	---------------



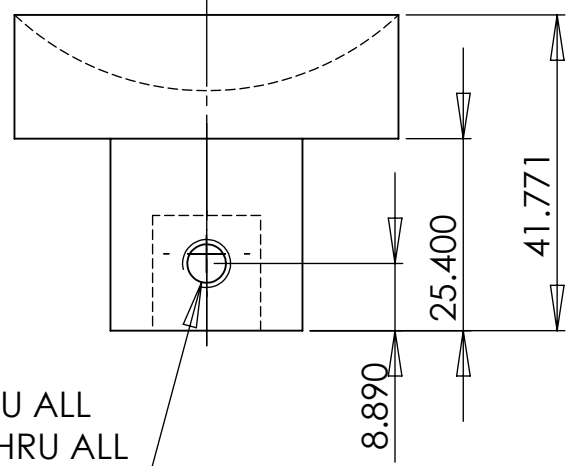
MAY NEED TO MAKE  $\phi$  .578 TO FIT SHAFT  
SHAFT IS HEXAGON CIRCUMSCRIBED IN  
 $\phi$  .5665 CIRCLE

DISHED FORMED BY 3PT ARC  
CONNECTING 2.6" WIDE BY .79"  
DEEP

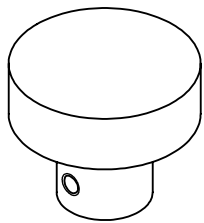
DISHED TOP



CAN UNDERSIZE MAJOR DIA  
AS NEEDED FOR STOCK



$\phi$  5.105 THRU ALL  
1/4-20 UNC THRU ALL



TITLE:

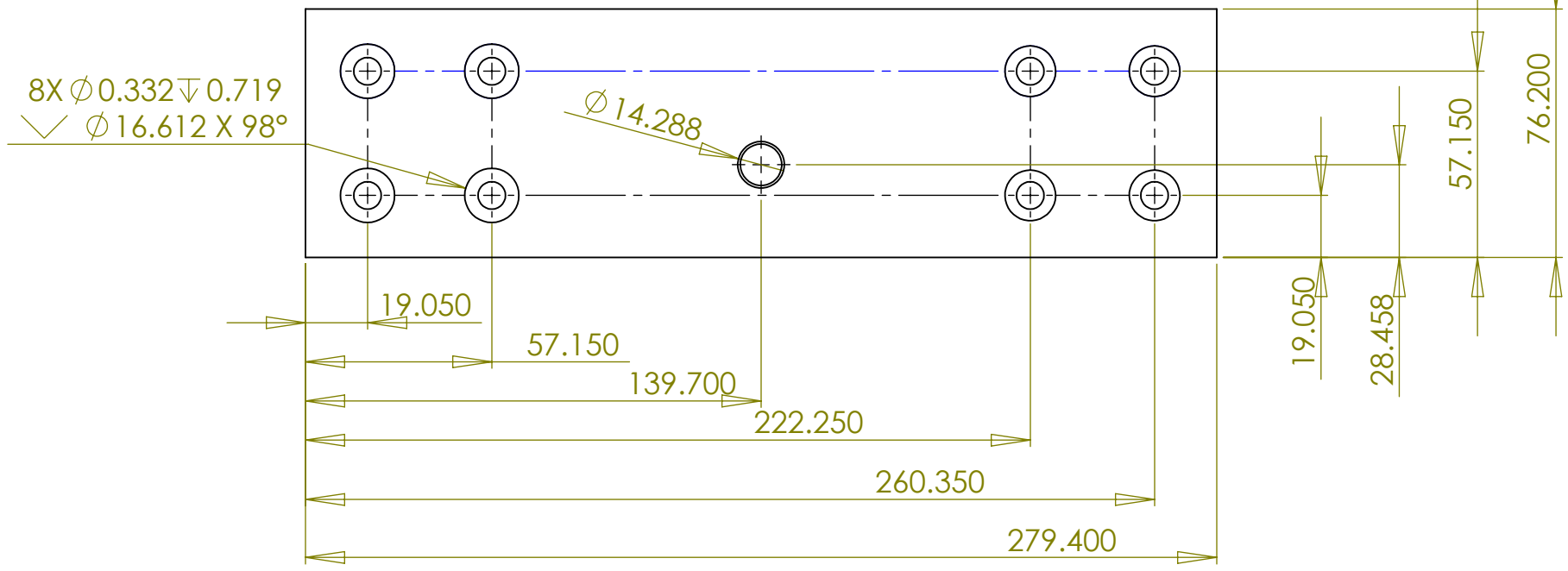
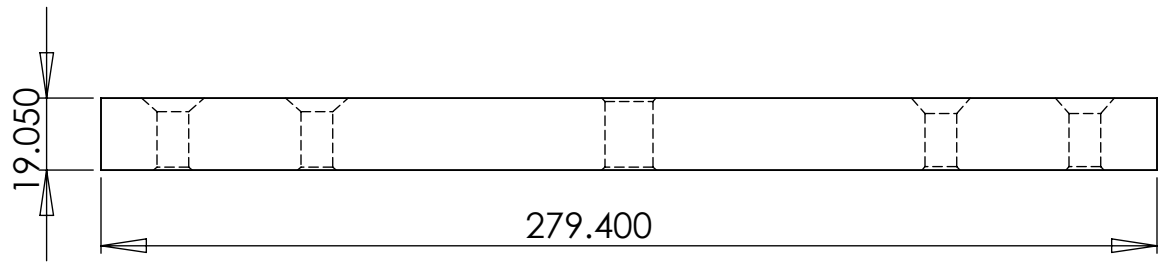
MAT: 2" ROD SCRAP OR BUY

SIZE	DWG. NO.	REV
EG	STANDING ASSEMBLY	April 30

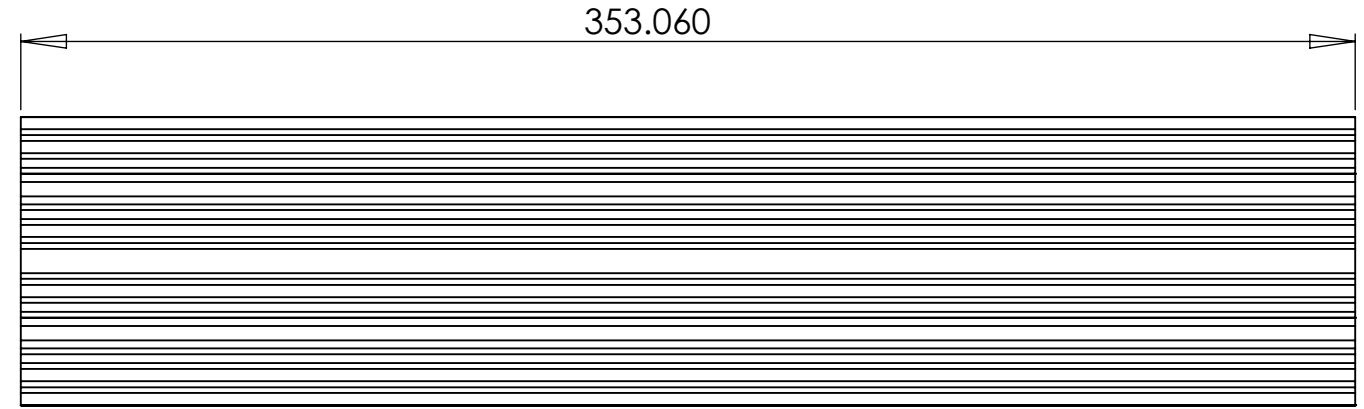
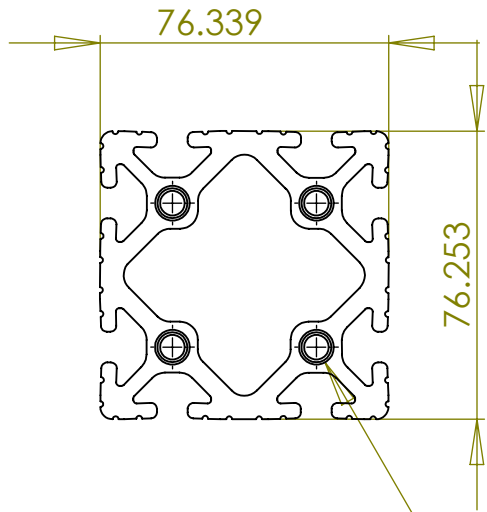
SCALE: 1:1

WEIGHT:

SHEET 3 OF 10



TITLE:		
MAT: .75" THICK AL BAR		
SIZE	DWG. NO.	REV
<b>A</b>	EGL STANDING ASSEMBLY	April 30
SCALE: 1:5	WEIGHT:	SHEET 4 OF 10



$\phi$  6.528  $\nabla$  22.936  
 5/16-18 UNC  $\nabla$  15.875  
 $\surd$   $\phi$  9.208 X 90°, Near Side

TITLE:

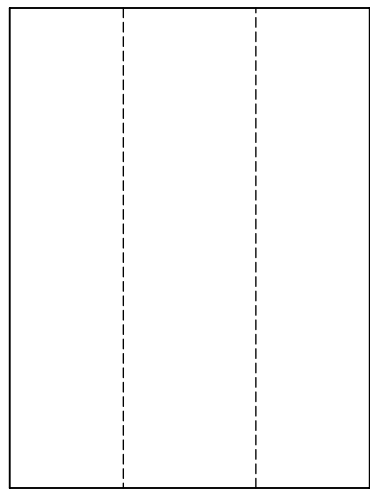
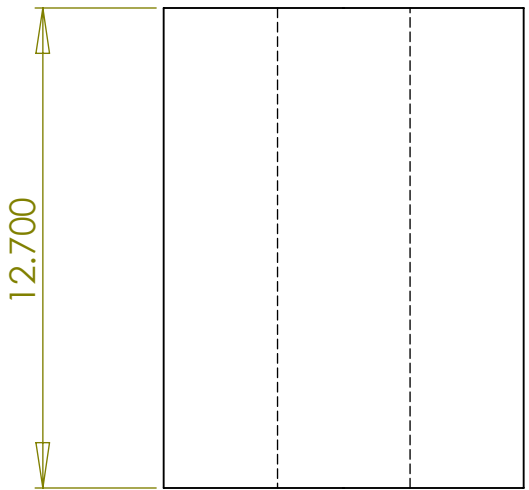
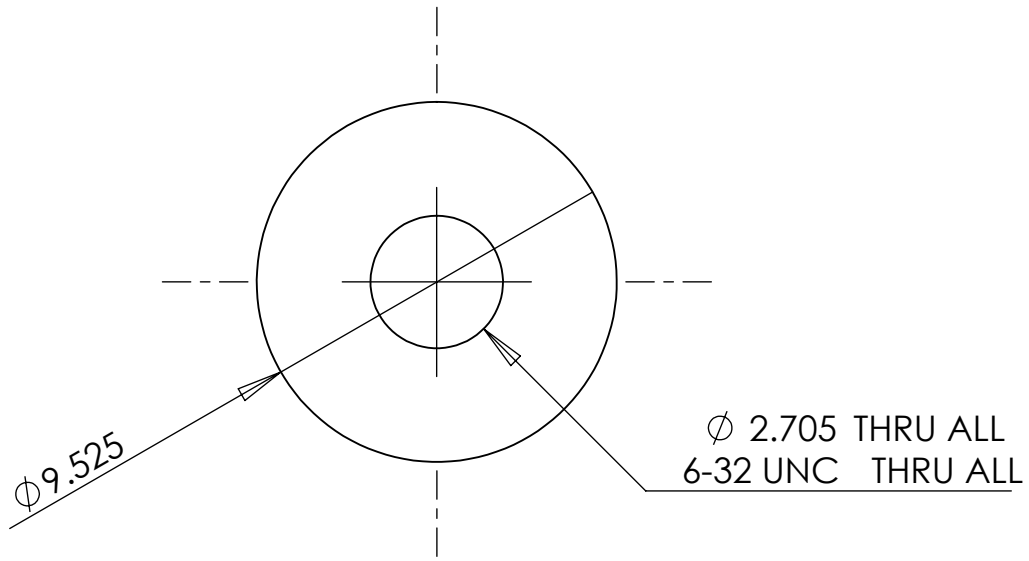
MAT: 3030 80/20 Extrusion  
 MAKE TWO

SIZE	DWG. NO.	REV
A	EGL	STANDING ASSEMBLY April 30

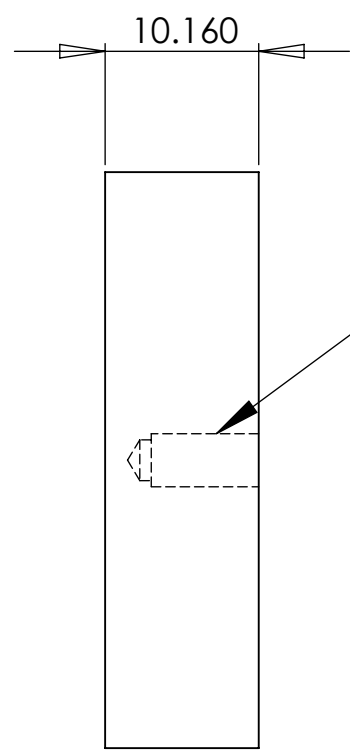
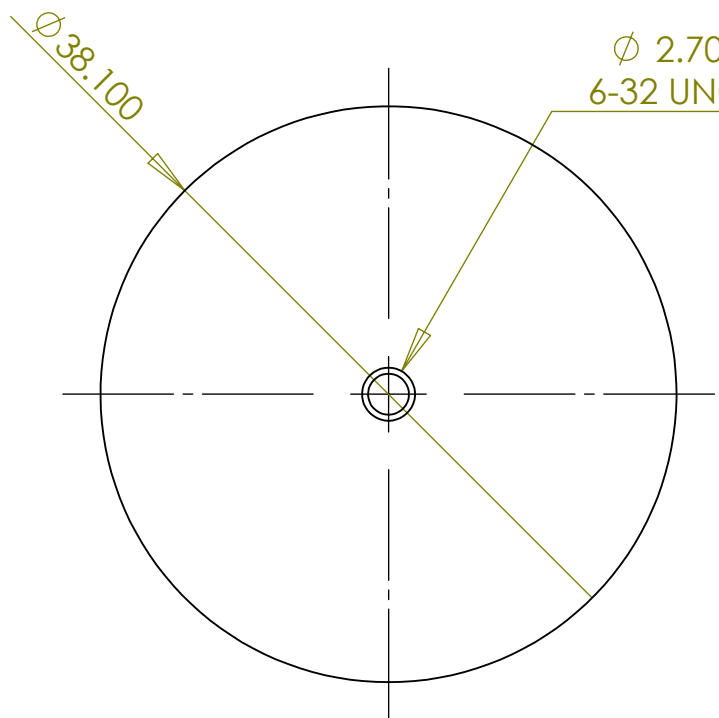
SCALE: 1:5

WEIGHT:

SHEET 5 OF 10



TITLE:		
MATL:Plastic or Aluminum Scrap		
SIZE	DWG. NO.	REV
<b>A</b>	EGL	STANDING ASSEMBLY April 30
SCALE: 5:1	WEIGHT:	SHEET 6 OF 10



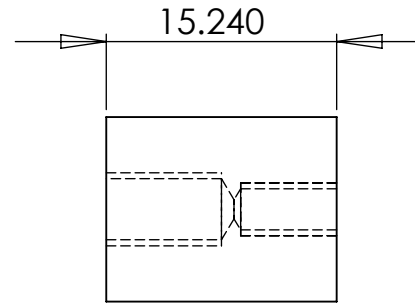
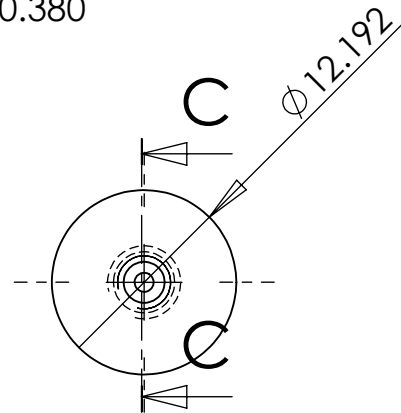
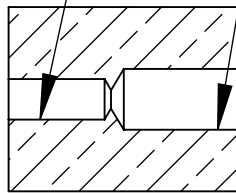
TITLE:  
MAT:Plastic Scrap or 2" Rod

SIZE DWG. NO. REV  
EGL **A** STANDING ASSEMBLY April 30

SCALE: 2:1 WEIGHT: SHEET 7 OF 10

$\varnothing 0.107 \nabla 0.250$   
6-32 UNF  $\nabla 0.280$

$\varnothing 0.159 \nabla 0.300$   
10-32 UNF  $\nabla 0.380$



# SECTION C-C

TITLE:

Cut from Al stock (scrap)

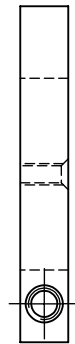
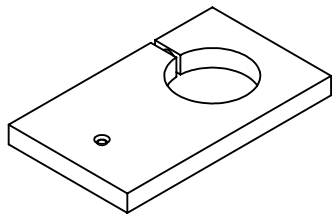
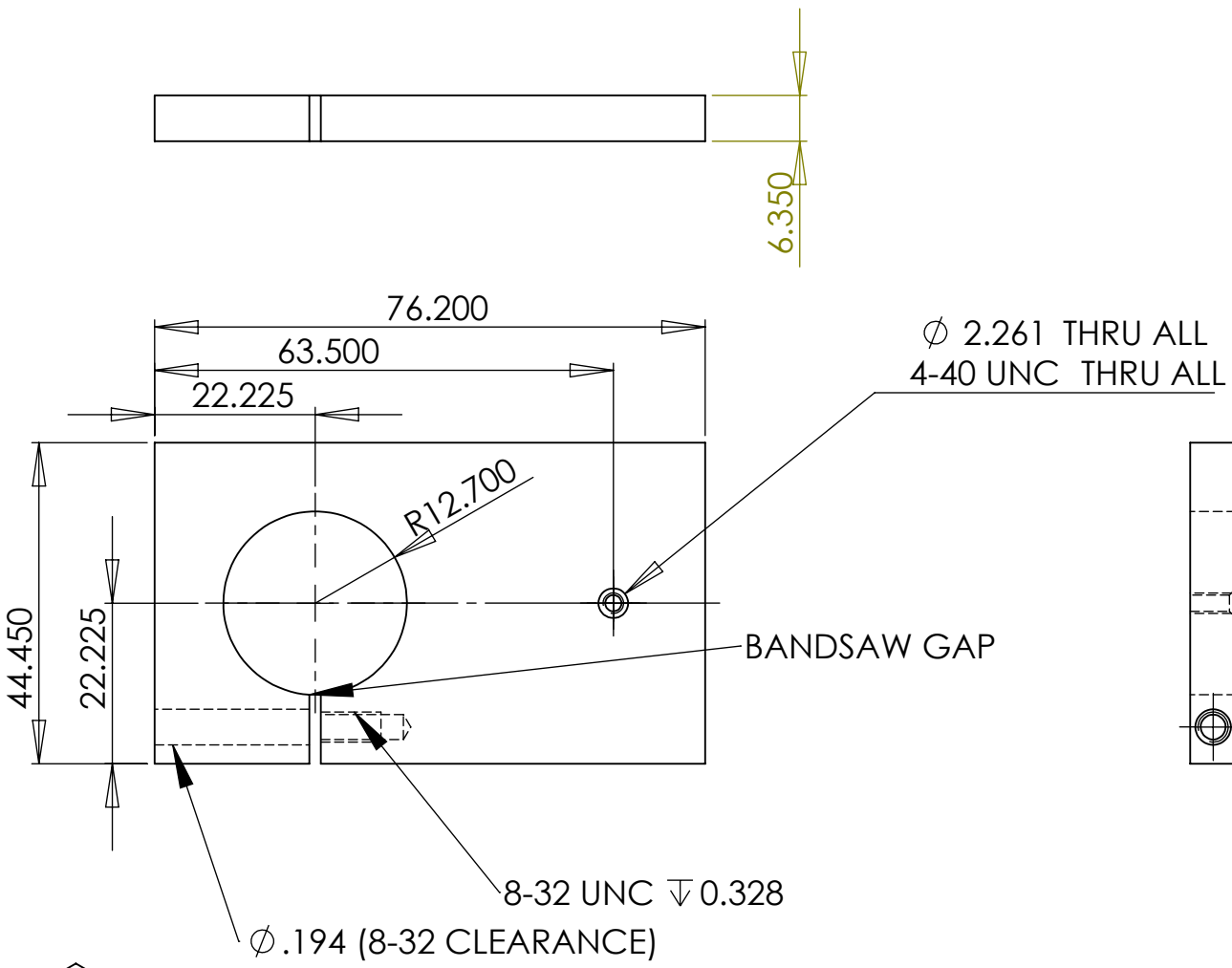
SIZE	DWG. NO.	REV
<b>A</b>	EGL	STANDING ASSEMBLY April 30

SCALE: 2:1

WEIGHT:

SHEET 8 OF 10





TITLE:

MAT: .25" THICK AL SCRAP

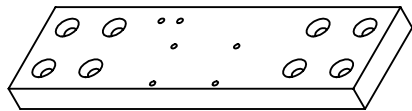
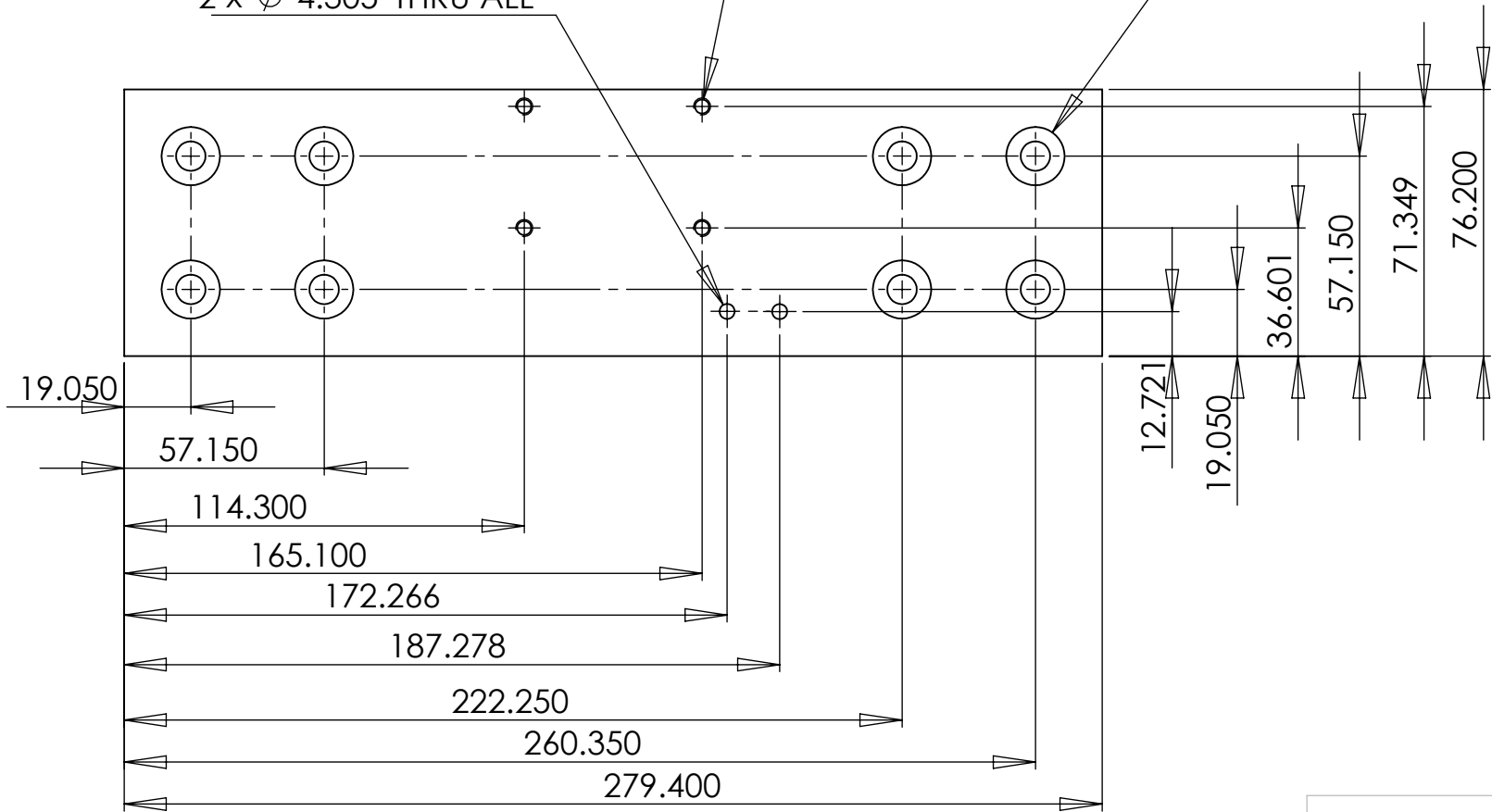
SIZE	DWG. NO.	REV
<b>A</b>	EG	STANDING ASSEMBLY April 30

SCALE: 1:1	WEIGHT:	SHEET 9 OF 10
------------	---------	---------------

4 x  $\phi$  4.039 THRU ALL  
10-32 UNF THRU ALL

8 x  $\phi$  8.433 THRU ALL  
 $\surd$   $\phi$  16.662 X 82°

2 x  $\phi$  4.305 THRU ALL



TITLE:

MAT: .75" AL BAR

SIZE DWG. NO. REV  
EGL **A** STANDING ASSEMBLY April 30

SCALE: 1:5

WEIGHT:

SHEET 10 OF 10